

STEEL AND ALUMINIUM  
EXTERIOR DOORS

**2023 CATALOG**

1ST EDITION

**MK DOOR**

 **92 mm**  
FULL 0,62 W/(m<sup>2</sup>·K)  
GLAZED 0,74 W/(m<sup>2</sup>·K)

 **68 mm**  
FULL 0,98 W/(m<sup>2</sup>·K)  
GLAZED 1,1 W/(m<sup>2</sup>·K)





# 92mm

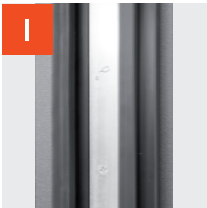
## TECHNICAL INFORMATION

### STEEL AND ALUMINIUM DOORS

- 92 mm thick door leaf covered with PVC veneer in anthracite, white, golden oak, walnut or winchester color
- filling: XPS foam
- door leaf and frame with rubber seals
- plastic rail and stile set strengthened by wooden rail and stile set
- door leaf in the four-sided rebate system
- 6 pieces of anti-burglary pins
- 3D adjustable hinges
- 5 point Winkhaus locking system
- aluminium door frame filled with insulating material, covered with PVC veneer in the same color as the door leaf or in black, with thermal break threshold
- two hardware options: traditional - HAGA VDV handle with key lock switch or modern - SETTO SOLO handle with key lock switch and single-sided 150 cm long rectangular pull-handle
- glazing: brown reflex glass, mirror glass, frosted glass, black and graphite glass are available only on a special customer order and for an additional cost
- P4 glass: panes with increased burglary resistance, available for all types of glazing, on special customer order and at additional cost (extra charge: 20%)

#### DIMENSIONS

clear opening width (cm)	clear opening height (cm)	total door width (cm)	total door height (cm)	mounting hole width (cm)	mouning hole height (cm)
94	200	110	210	112	211



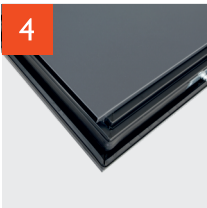
1 DOOR LEAF THICKNESS 92 mm



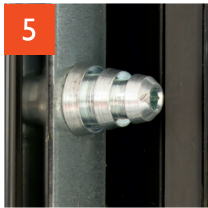
2 BOLT LOCK - 4 PIECES



3 MAIN KEY LOCK



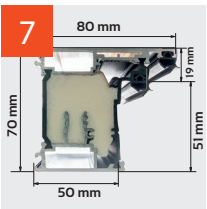
4 DOOR LEAF WITH FOUR-SIDED REBATE



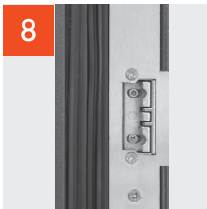
5 ANTI-BURGLARY PINS - 6 PIECES



6 3D ADJUSTABLE HINGE



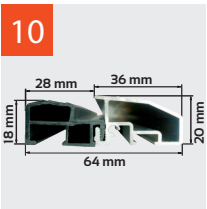
7 ALUMINIUM DOOR FRAME WITH INSULATION FOAM



8 STRIKER WITH LOCK PRESSURE ADJUSTMENT



9 TOP AND BOTTOM BOLT BRACKET



10 ALUMINIUM THRESHOLD WITH THERMAL BREAK



11 HAGA VDV HANDLE WITH KEY LOCK SWITCH

OR



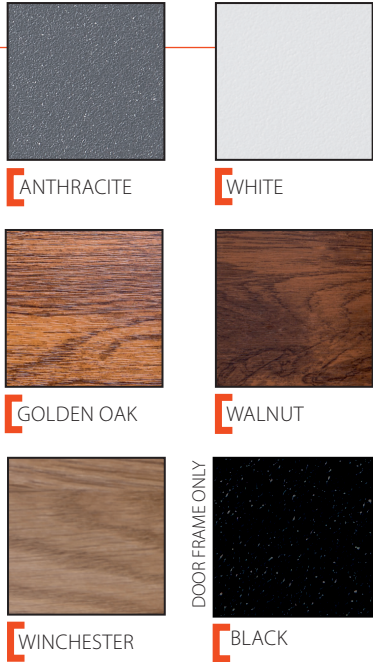
12 SETTO SOLO HANDLE WITH KEY LOCK SWITCH AND DOOR PULL-HANDLE



13 HINGE COVERS



13 HINGE COVERS



90 cm LEAF AND FRAME (DOOR SET) DIMENSIONS: 110 cm x 210 cm



THERMALLY INSULATED DOOR FRAME



HEAT TRANSFER COEFFICIENT  
FULL 0,62 W/(m²·K)  
GLAZED 0,74 W/(m²·K)



NO POSSIBILITY OF SHORTENING



# 68mm

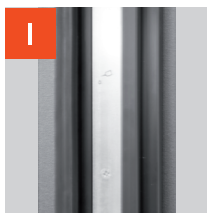
## TECHNICAL INFORMATION

### STEEL AND ALUMINIUM DOORS

- 68 mm thick door leaf covered with PVC veneer in anthracite, white, golden oak, walnut or winchester color
- filling: XPS foam
- door leaf and frame with rubber seals
- wooden rail and stile set
- door leaf in the four-sided rebate system
- 3 pieces anti-burglary pins
- 3D adjustable hinges
- 5 point Winkhaus locking system
- aluminium door frame filled with insulating material, covered with PVC veneer in the same color as the door leaf or in black, with thermal break threshold
- two hardware options: traditional - HAGA VDV handle with key lock switch or modern - SETTO SOLO handle with key lock switch and single-sided 150 cm long rectangular pull-handle
- glazing: brown reflex glass, mirror glass, frosted glass, black and graphite glass are available only on a special customer order and for an additional cost
- P4 glass: panes with increased burglary resistance, available for all types of glazing, on special customer order and at additional cost (extra charge: 20%)

#### DIMENSIONS

clear opening width (cm)	clear opening height (cm)	total door width (cm)	total door height (cm)	mounting hole width (cm)	mounting hole height (cm)
90	201	102	210	104	211



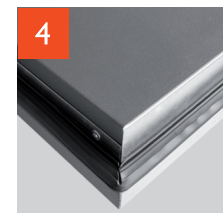
1 DOOR LEAF THICKNESS 68 mm



2 BOLT LOCK - 4 PIECES



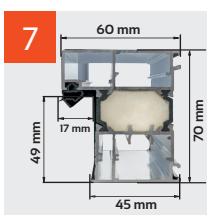
3 MAIN KEY LOCK



4 DOOR LEAF WITH FOUR-SIDED REBATE



5 ANTI-BURGLARY PINS - 3 PIECES



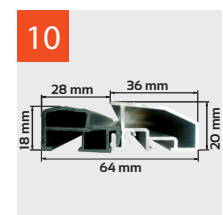
7 ALUMINIUM DOOR FRAME WITH INSULATION FOAM



8 STRIKER WITH LOCK PRESSURE ADJUSTMENT



9 TOP AND BOTTOM BOLT BRACKET



10 ALUMINIUM THRESHOLD WITH THERMAL BREAK



11 HAGA VDV HANDLE WITH KEY LOCK SWITCH



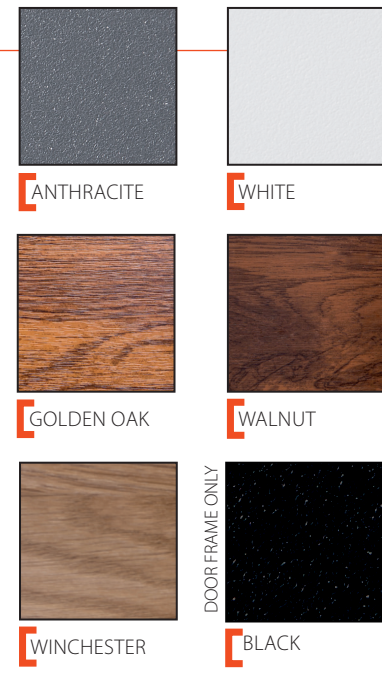
12 SETTO SOLO HANDLE WITH KEY LOCK SWITCH AND DOOR PULL-HANDLE



13 HINGE COVERS



13 HINGE COVERS



90 cm LEAF AND FRAME (DOOR SET) DIMENSIONS: 102 cm x 210 cm



THERMALLY INSULATED DOOR FRAME



HEAT TRANSFER COEFFICIENT FULL 0,98 W/(m²·K) GLAZED 1,1 W/(m²·K)



DOOR SHORTENING FROM 4,5 cm TO 7 cm (EXTRA CHARGE)





# 92mm 68mm



traditional: door set with threshold and hardware [HAGA VDV handle, key lock switch]

modern: door set with threshold and hardware [SETTO SOLO handle, key lock switch and 150 cm long door pull-handle]

there is no extra charge for steel application around the glass, hardware or frame in black color



[92MK1] [68MK1]



[92MK2] [68MK2]



[92MK2] [68MK2]



[92MK3] [68MK3]



[92MK3] [68MK3]



[92MK4] [68MK4]



[92MK5] [68MK5]



[92MK6] [68MK6]



# 92mm 68mm



traditional: door set with threshold and hardware [HAGA VDV handle, key lock switch]

modern: door set with threshold and hardware [SETTO SOLO handle, key lock switch and 150 cm long door pull-handle]

there is no extra charge for steel application around the glass, hardware or frame in black color



[92MK7] [68MK7]



[92MK8] [68MK8]



[92MK9] [68MK9]



[92MK10] [68MK10]



[92MK11] [68MK11]



[92MK12] [68MK12]



[92MK13] [68MK13]



[92MK14] [68MK14]



92mm  
68mm



[92MK15] [68MK15]

only 68 mm model can be shortened



[92MK16] [68MK16]

only 68 mm model can be shortened



[92MK17] [68MK17]

only 68 mm model can be shortened



[92MK18] [68MK18]

only 68 mm model can be shortened



[92MK19] [68MK19]

only 68 mm model can be shortened



[92MK20] [68MK20]

only 68 mm model can be shortened

## TYPES OF GLAZING



### BROWN REFLEX GLASS

Brown tinted glass with semi-mirror effect. Translucent on both sides.



### FROSTED GLASS

Easy to clean frosted glass. Semi-translucent.



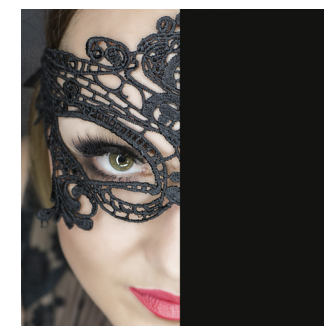
### MIRROR GLASS

The glass look like a silver mirror. Non-translucent.



### GRAPHITE GLASS

Graphite tinted glass with semi-mirror effect. Translucent on both sides. Available only on a special customer order and at an additional cost.



### BLACK GLASS

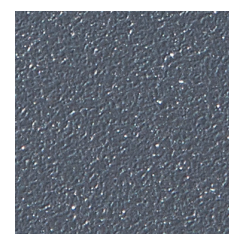
The glass look like a black mirror. Non-translucent. Available only on a special customer order and at an additional cost.



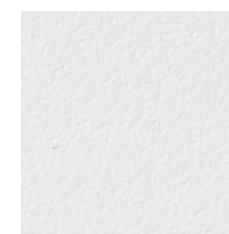
### P4 GLASS

Safety glass built from two float glass panes both 4 mm of width, combines with four anti-burglary PVB foils. Available only on a special customer order and at an additional cost.

## COLORS



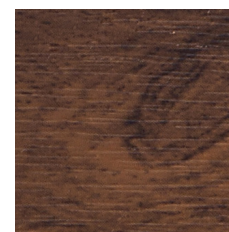
[ANTHRACITE]



[WHITE]



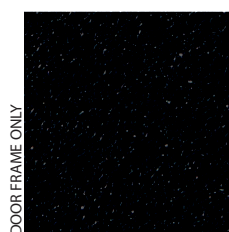
[GOLDEN OAK]



[WALNUT]



[WINCHESTER]



[BLACK]



# FULL LEAF APPLICATIONS

NEW

## GLASS BLACK (black lacobel), SINTERED STONE

- GLASS BLACK applications are made of 4 mm thin black lacobel glass
- SINTERED STONE TAN and NERO applications are made of 1,5 - 2 mm thin natural stone on a fiberglass base



SHORTCUT FROM  
4,5 cm TO 7 cm  
ONLY FOR APPLICATION No. 7  
(extra charge)

IMPORTANT!  
Due to the structure and natural properties of minerals, photos may be different from reality.



APPLICATION No. 1



APPLICATION No. 2



APPLICATION No. 3



APPLICATION No. 4



APPLICATION No. 5



APPLICATION No. 6



APPLICATION No. 7

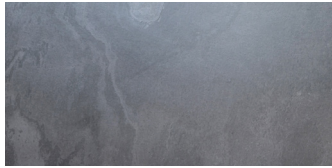
### APPLICATIONS



GLASS BLACK



SINTERED STONE TAN



SINTERED STONE NERO

EXTRA CHARGE TO A FULL LEAF PRICE (MK1 IN SELECTED THICKNESS)

for GLASS BLACK APPLICATION No. 1-7 [single-sided]

for GLASS BLACK APPLICATION No. 1-7 [double-sided]

SINTERED STONE TAN / NERO APPLICATION No. 1-7 at the same price

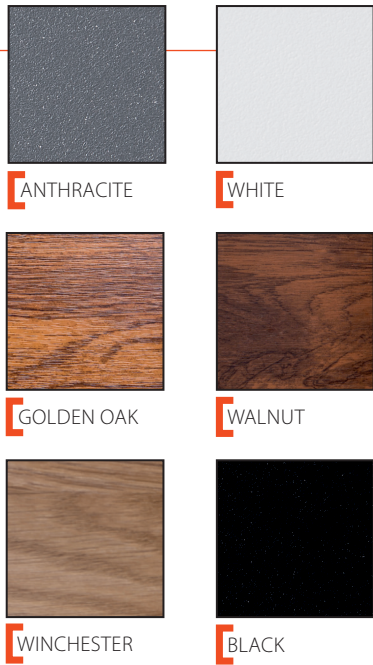


# FANLIGHTS

for 92/68 mm steel and aluminium doors

- height of top fanlight from 20 to 70 cm
- width of side fanlight from 20 to 100 cm
- custom fanlight dimensions are available on special customer order and at an additional cost (extra charge: 20%)
- glazing: brown reflex glass, mirror glass, frosted glass, black and graphite glass are available only on a special customer order and at an additional cost
- P4 glass: panes with increased burglary resistance, available for all types of glazing, on special customer order and at additional cost (extra charge: 20%)
- top and side extension profile: 2,5 cm; 5 cm; 10 cm

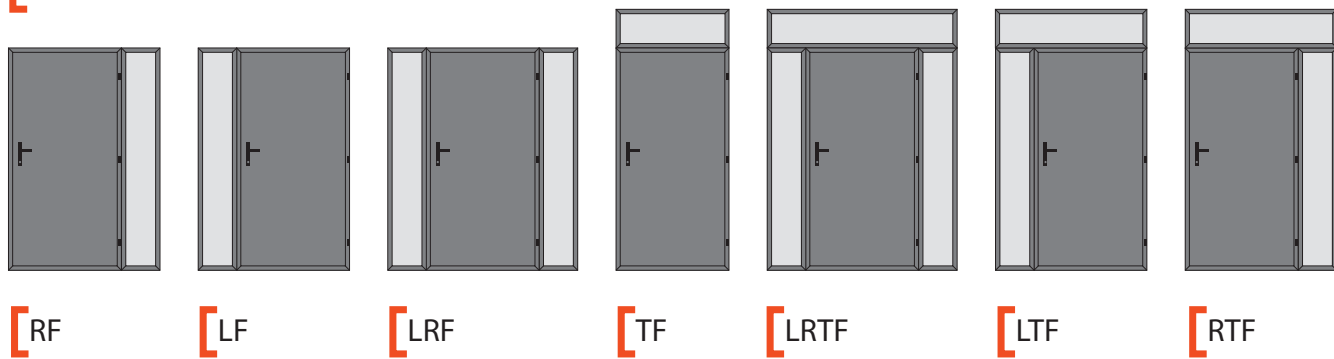
**FANLIGHT CONSTRUCTION:** screws fastening the door frame with the fanlight, expanding tape sealing the connection with the fanlight, gasket connecting the door frame with the fanlight



0,87 W/(m²·K)  
HEAT TRANSFER COEFFICIENT

- 1 aluminium profile
- 2 thermal insulation foam
- 3 three panes of glass

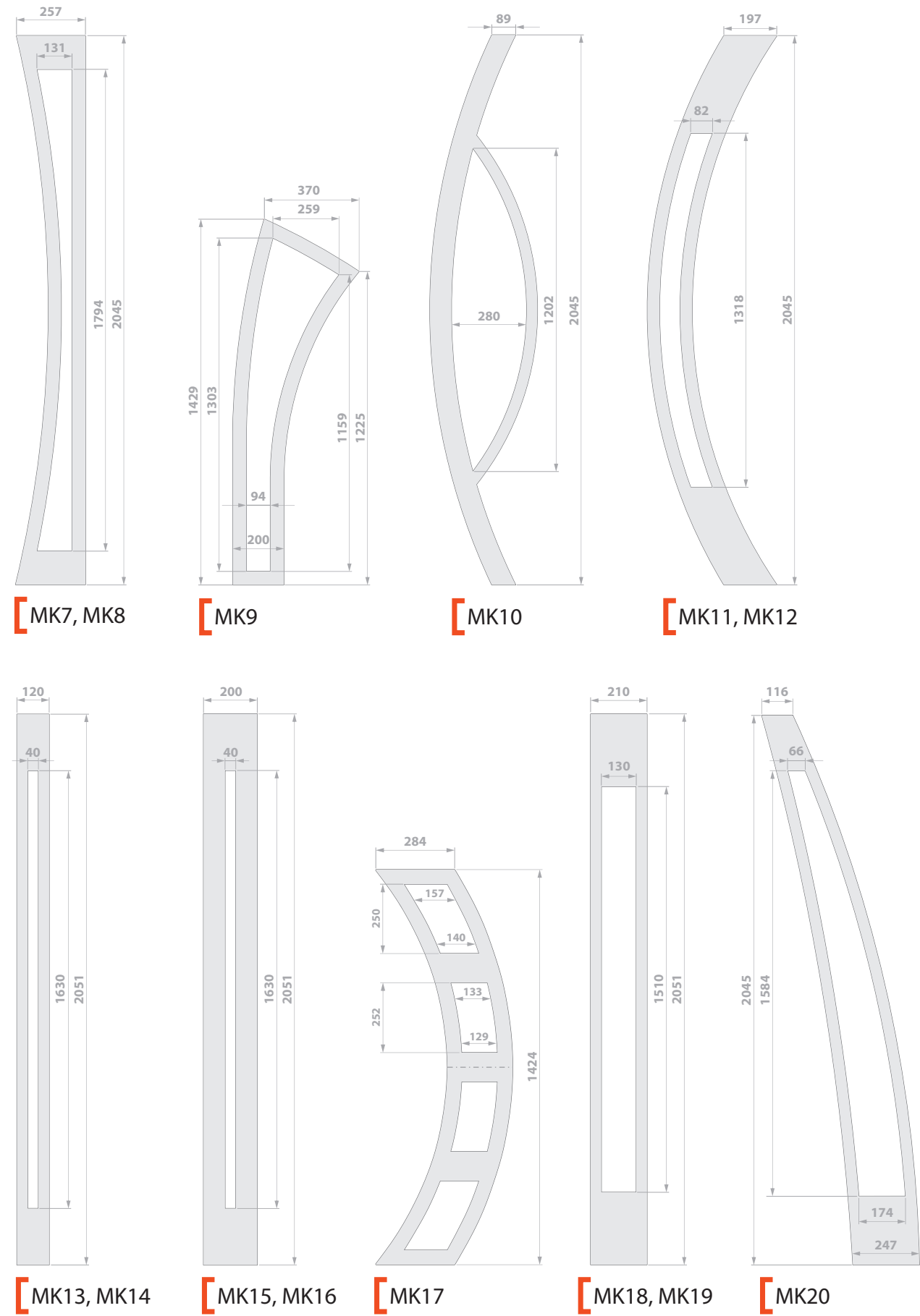
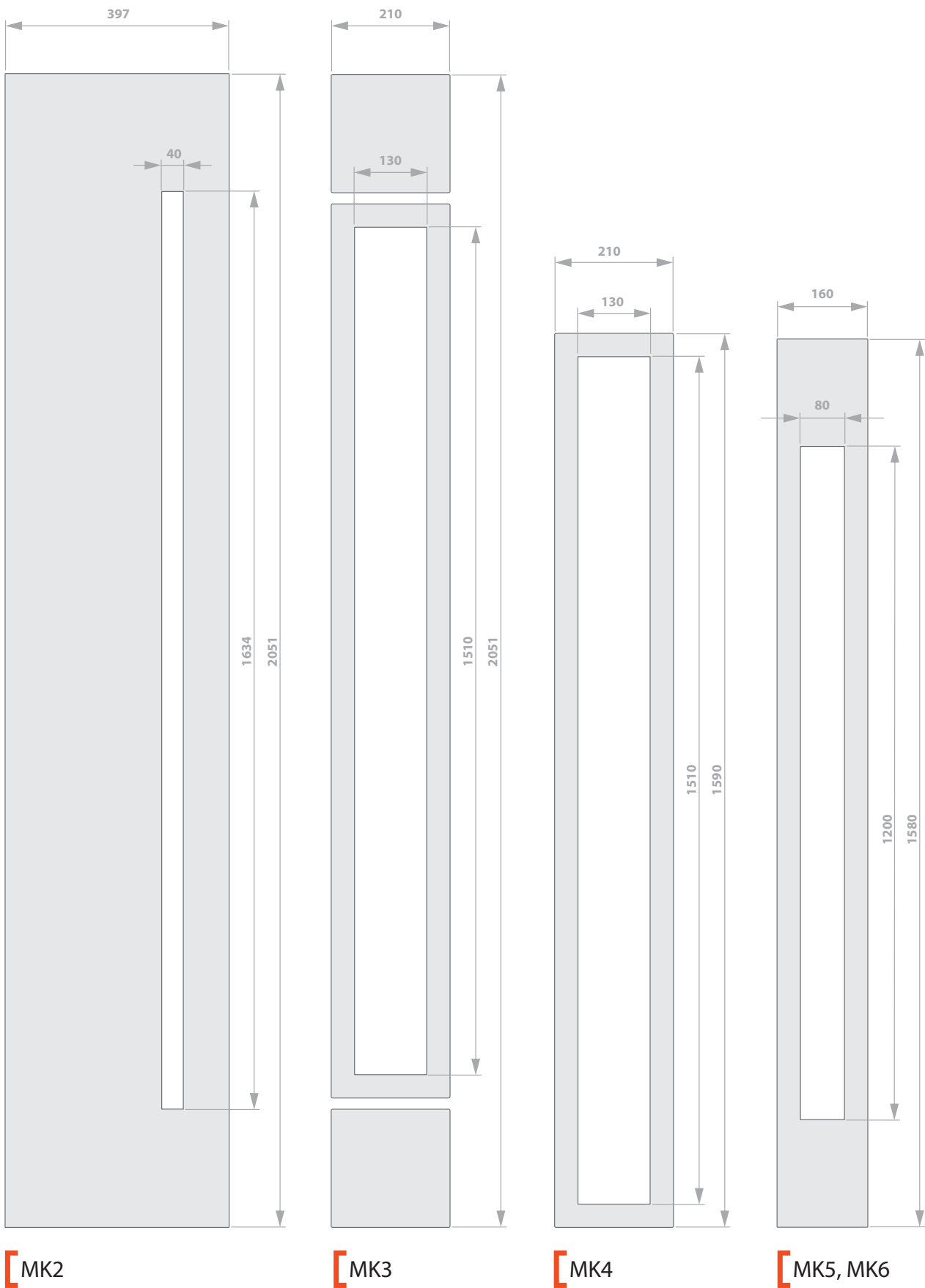
OPTION TO CHOOSE:





# STAINLESS STEEL APPLICATIONS

FROM THE EXTERNAL SIDE (wider side of the door leaf)

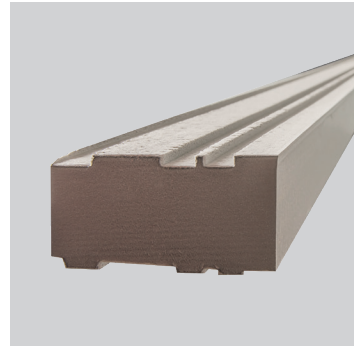




## ACCESSORIES AT EXTRA CHARGE



**PROFILE FRAME EXTENSION**  
(running metre)



**THRESHOLD BASE**  
60 x 30 x 1100 mm



**C-CLASS KEY LOCK SWITCH  
WITH OR WITHOUT KNOB**



## CARE AND PROTECTIVE SPRAY FOR STAINLESS STEEL



## ELECTROMAGNETIC LOCK



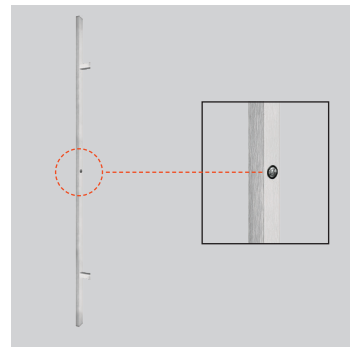
**SELF-CLOSING MECHANISM**  
(black or silver)



**SOLID SOLO FLEX PREMIUM**  
„CLASS 3” DOOR HANDLE  
(black or silver, extra charge added to the price  
of the selected hardware)



**SOLID FLEX PREMIUM**  
„CLASS 3” DOOR HANDLE  
(black or silver, extra charge added to the price  
of the selected hardware)



**DOOR PULL-HANDLE WITH WIRELESS ELECTRONIC SWITCH**  
(the set includes: power supply unit and radio transmitter, an electromagnetic lock is necessary and must be purchased additionally)

## NOTES





This publication does not constitute an offer within the meaning of the legal regulations and is for informational purposes only. The manufacturer reserves the right to change and improve the products listed in this catalogue without prior notice and reserves the right to printing errors. Colours may differ from reality. There may be colour differences depending on the type of material (door frames, handles, stainless steel glass frames). All copyrights reserved. Complete and partial copying and publication of the catalogue on websites and other mass media is prohibited without the prior written permission of the manufacturer.



[www.mk-door.eu](http://www.mk-door.eu)